



**Description**  
FliteCharts powered by Garmin, a 2007 standard **enabled at the factory**, is the electronic version of National Aeronautical Charting terminal procedures charts. The charts are displayed with high-resolution and in color for applicable charts. FliteCharts database subscription is available from Garmin and includes:

- Arrivals (STAR)
  - Departure Procedures (DP)
  - Approaches
  - Airport Diagrams
- NOTAMs not available with FliteCharts see ChartView

The FliteChart territories include primarily the United States and surrounding areas.

**Cycles**

FliteCharts does require database revisions every 28 days and are posted on Garmin's website 7 days before their effective date. FliteCharts become inoperative on the "Disables" date (180 days after the "Expires" Date). If the FliteCharts database is out of date, but still within the 180 day grace period, a yellow message states "Chart is out of date! Continuing accepts current settings!" When the FliteCharts database has reached the disable date, a yellow message will state "Chart data is expired; Load new data for access".

**Delivery Activation**

Current cycle of FliteChart is installed and activated at delivery.

**Subscription Information\***

- Subscription pricing:
- Single Online Update: \$95.00
  - Annual Online Service: \$395 for 13 consecutive cycles, one update per cycle
  - Single Update with shipped DVD: \$150.00
  - Annual Service with shipped DVDs: \$575 for 13 consecutive cycles, one update per cycle

**Ordering Information**



Order from Garmin International at [www.garmin.com](http://www.garmin.com) or contact:

**1-800-800-1020 or (913) 397-8200**  
**1-866-429-9296 (CAN)**  
**Free 0808 238 0000 (within U.K.)**

\*All pricing and content subject to change without notice

# SafeTaxi

**Description**

SafeTaxi, a 2007 standard, **enabled at the factory**, is an enhanced feature that gives greater map detail when zooming in on airports at close range. The SafeTaxi database contains the graphical depiction of over 631 airport diagrams. *The SafeTaxi database is currently only available for the U.S. coverage region which contains information on limited airports within the U.S.*

The maximum map ranges for enhanced detail are pilot configurable. When zoomed in close enough to show the airport detail, the map reveals runways with numbers, taxiways with identifying letters/numbers, and airport landmarks including ramps, buildings, control towers and other prominent features. When the aircraft location is within the screen boundary an airplane symbol is shown on any of the navigation map views for enhanced position awareness.



**Cycles**

When turning on the G1000 system, the Power-Up Splash screen indicates whether the databases are current, out of date, or not available. The Splash Screen shows the SafeTaxi database cycle number, revision date, and next revision date. The message "NO SafeTaxi Data" appears if the database is not available on the database card. For your convenience, updates are available every 56 days on Garmin's website 7 days before their effective date.

**Delivery Activation**

Current cycle of FliteCharts is installed and activated at delivery.

**Subscription Information\***

- Subscription pricing is as follows:
- Single Update: \$35.00
  - Annual Service: \$195 for 7 consecutive cycles, one update per cycle

**Ordering Information**



Order from Garmin International at [www.garmin.com](http://www.garmin.com) or contact:

**1-800-800-1020 or (913) 397-8200**  
**1-866-429-9296 (CAN)**  
**Free 0808 238 0000 (within U.K.)**

\*All pricing and content subject to change without notice



**Description**

The terrain database contains the elevation data which represents the topography of the earth. Terrain database updates are not cyclic in nature and are not updated on a regularly scheduled basis. This is because the data does not change regularly as do man-made objects (towers, airports, VORs, etc.).

**Cycles**

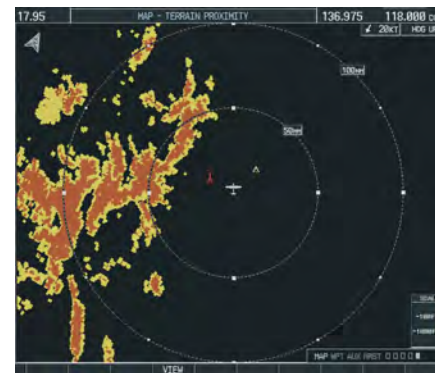
Updates to terrain data are primarily driven by new data sources and/or error correction.

**Subscription Information\***

Single Update: \$150.00

**Delivery Activation**

Current cycle of Terrain is installed at delivery.



**Description**

The obstacle database contains the locations of towers, tall buildings, and other vertical obstructions that could be a potential source of hazard to pilots.

**Cycles**

Updates are available every 56 days. For your convenience, they are posted on the Garmin website 7 days before their effective date.

**Delivery Activation**

Current cycle of Terrain is installed at delivery.

**Subscription Information\***

Single Update: \$35.00  
Annual Service: \$195 for 7 consecutive cycles, one update per cycle

**Ordering Information**



Order from Garmin International at [www.garmin.com](http://www.garmin.com) or contact:

**1-800-800-1020 or (913) 397-8200**  
**1-866-429-9296 (CAN)**  
**Free 0808 238 0000 (within U.K.)**

\*All pricing and content subject to change without notice



**Description**

Jeppesen NavData™ database is used to depict airways, nav aids, airspace, airports, Terminal Procedures, and more.

High integrity Jeppesen NavData is trusted by pilots worldwide. Thousands of changes occur in the world's complex airspace system every month. Jeppesen has the proven resources, and experience to gather, edit and disseminate these changes in a timely manner. You receive the most accurate, current information available.



**Cycles**

Jeppesen's NAV Database updates on a 28 day cycle to ensure latest information is passed along to subscribers. Information is gathered from 220 separate agencies worldwide and then cross-checked using multiple sources. An additional integrity check occurs as analysts review hard copy reports looking for errors or omissions. Then, the data is double-checked by computer for reasonability in comparison to other data and against the thousands of business rules built into the database.

**Delivery Activation**

Current cycle of Jeppesen NavData is installed and activated at delivery.

**Three free NavData updates are included with your airplane purchase.**

To activate your updates, visit Jeppesen's website at [www.jeppesen.com](http://www.jeppesen.com) or call 1-800-353-2107

**Subscription Information\***

Regional subscription pricing is available on an annual basis. Regions include:

- All United States \$380 per Year
- East/ Central United States \$320 per Year
- West/ Central United States \$320 per Year
- Central Europe \$330 per Year
- Australia \$320 per Year
- Americas (North, Central and South America) \$440 per Year
- International (EXCEPT North, Central and South America) \$440 per Year
- Complete World-Wide Coverage \$780 per Year

**Ordering Information**

**For complete information on the NavData subscriptions contact Jeppesen at 1-800-353-2107 or order from Jeppesen at [www.jeppesen.com](http://www.jeppesen.com)**

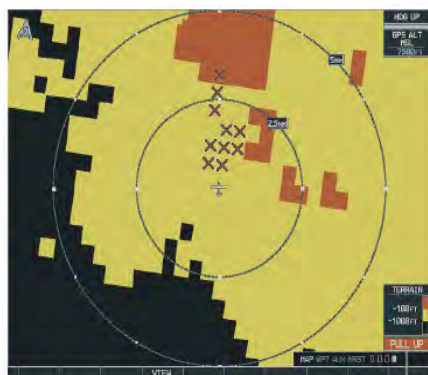
\*All pricing and content subject to change without notice

# NAV III Cessna Single Engine TAWS-B

## Description

**Controlled flight into terrain (CFIT) is the leading cause of aircraft accidents today!**

In addition to poor visibility; often cockpit distractions, inattention or miscommunication between the pilot and the controller are contributing factors. Terrain Awareness and Warning System Class-B, TAWS-B, enhancement improves the current Terrain and Obstacle Proximity system by providing additional integrated warnings and cautions with both aural and visual warning of impending terrain and obstacles.



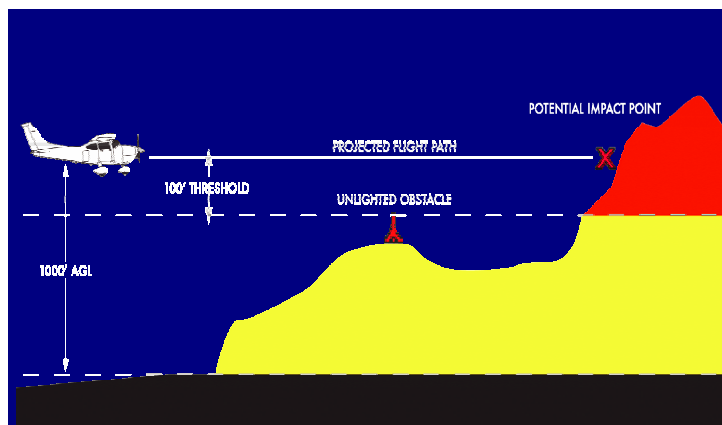
Hearing the words  
**"PULL UP"**  
Or  
**"WARNING TERRAIN"**  
through TAWS-B,  
is an option made available to you.

## Cycles

Other than current terrain and obstacle data, no other subscription services are needed.

## Delivery Activation/ Enablement

TAWS-B is a factory option available for enablement at the time of delivery. TAWS-B requires a System configuration upload activation kit per Cessna Service Bulletin SB06-34-03 (or later) and a current terrain and obstacle database cycles. The activation kit, part number TAWSBGW00, is available factory direct or aftermarket from your local Cessna Service Station or from Cessna Propeller Aircraft Customer Services.



For more TAWS-B information or to purchase the activation kits please contact Cessna Propeller Customer Services, 316-517-5800.

# CHARTVIEW POWERED BY JEPPESEN

## Description

Optional Garmin ChartView brings an electronic version of Jeppesen's extensive library of charts and airport diagrams directly to the G1000's Multi-Function Display. ChartView displays airport diagrams and arrival, approach and departure procedures. In addition, the aircraft's present position is displayed on the chart!



## Cycles

Cycle is 14 days and database is purchased direct through Jeppesen. Disable date is 70 days after expiration date. When the Jeppesen database becomes disabled the charts will not display at all. New revisions are issued via CD-ROM every two weeks to keep revision-service current or subscribers can access updates on-line utilizing a broadband or dial-up connection anytime.

## Activation/ Enablement\*

ChartView is an optional, yet recommended, aftermarket kit. ChartView requires a System configuration upload activation kit per Cessna Service Bulletin SB07-34-01 (or later) and a current Jeppesen ChartView subscription. The activation kit, part number CHRTVGSW00, is available for \$2995.00 from your local Cessna Service Station or directly from Cessna Propeller Aircraft Customer Services.

For more information or to purchase this activation kit please contact Cessna Propeller Customer Services, 316-517-5800.

## Subscription Information\*

Jeppesen gives the subscriber a global flexibility to choose a desired coverage area. Subscription prices vary per region.

Coverage Areas and regions include:

- Contiguous United States or regional US coverage
- Worldwide
- Regional International cover including; Atlantic, China, Canada and Alaska, Pacific, Europe, Eastern Europe, Latin America and Caribbean, South America, Africa, and Middle East regions

For complete information for ChartView subscriptions and pricing, contact Jeppesen at 1-800-353-2107 or order directly from Jeppesen at [www.jeppesen.com](http://www.jeppesen.com)

\*All pricing and content subject to change without notice



## Description

A key component of the G1000 system is the Garmin GDL69A receiver which enables the reception of both XM Satellite Radio and XM WX Satellite Weather. XM WX Weather is a comprehensive graphical weather displays 24x7 in your plane in the continental U.S. and 100 miles into U.S. Coastal waters. Multiple weather conditions similar to those shown over the internet or on TV weather reports can be shown in near real-time on your G1000 displays. XM WX gives you the ability to view weather across the U.S. at a glance, as well as the flexibility to zero in on any specific location you need – all you do is identify the area you want and zoom into it.



## XM WX Satellite

Weather features assist in making informed navigational decisions:

- Next Generation Radar (NEXRAD)
- Aviation Routine Weather Reports (METARs)
- Terminal Aerodrome Forecasts (TAFs)
- Temporary Flight Restrictions (TFRs)
- Lightning and Winds Aloft



XM Satellite Radio offers more than 150 channels, featuring music favorites as well as more than 30 channels of news, sports, talk and entertainment.

## Delivery Activation

XM WX Satellite Weather and XM Radio service will be active with a 6-month free sponsored period. This service will begin with the aircraft warranty start date.

## Subscription Information\*

### XM Weather Options

- Aviator LT, \$29.99 per month includes: NEXRAD, TFRs, City Forecasts, County Warnings, Precipitation Type (at surface), METARs, and TAFs
- Aviator, \$49.99 per month includes: Aviator LT information plus AIRMETS, Echo Tops, Severe Weather Storm tracks, Lightning, Winds Aloft and more!

### XM Satellite Radio Options

- Added with the XMWX Weather for \$6.99 per month.
- Radio only is \$12.95 per month.

For complete information for XM subscriptions contact XM at 1-800-985-9200 or order from XM at [www.XMRadio.com](http://www.XMRadio.com)

\*All pricing and content subject to change without notice

**NAV III G1000 Database Subscription Guide**

Cessna Propeller Aircraft Customer Services  
Database and Subscription Information Review to help get you up and flying in your new NAV III airplane

**316-517-5800**

032707